

# Factors associated with the course of health-related quality of life after a hip fracture

Sophie Moerman<sup>1</sup> · Anne J. H. Vochteloo<sup>2</sup> · Wim E. Tuinebreijer<sup>3</sup> ·  
Andrea B. Maier<sup>4</sup> · Nina M. C. Mathijssen<sup>1</sup> · Rob G. H. H. Nelissen<sup>5</sup>

Received: 7 January 2016 / Published online: 28 May 2016  
© Springer-Verlag Berlin Heidelberg 2016

## Abstract

**Introduction** The number of hip fracture patients is expected to grow the forthcoming decades. Knowledge of the impact of the fracture on the lives of elderly could help us target our care. The aim of the study is to describe HRQoL (Health-Related Quality of Life) after a hip fracture and to identify factors associated with the course of HRQoL in the first postoperative year.

**Materials and methods** 335 surgically treated hip fracture patients (mean age 79.4 years, SD 10.7, 68 % female) were included in a prospective observational cohort. HRQoL was measured with the SF-12 Health Survey, composed of the Physical and a Mental Component Summary Score (PCS, MCS), at admission (baseline) and at 3 and 12 months postoperatively. Eleven predefined factors known to be associated with the course of HRQoL were recorded: age, gender, physical status, having a partner at admission, living in an institution, prefracture level of

mobility, anemia, type of fracture and treatment, delirium during hospital stay and length of stay.

**Results** HRQoL declined between baseline and 3 months, and recovered between three and 12 months. PCS HRQoL did not recover to baseline values, MCS HRQoL did. Age younger than 80 years, ASA classification I and II, higher prefracture level of mobility, intracapsular fracture and treatment with osteosynthesis (compared to arthroplasty) were associated with greater initial decline in PCS HRQoL, none of the recorded factors were significant for decline in MCS HRQoL.

**Conclusions** Both PCS and MCS HRQoL declined after a hip fracture and PCS did not recover to baseline values. Healthier patients may need extra care to prevent them from having a steep decline in postoperative PCS HRQoL and arthroplasty should be considered with low threshold.

**Keywords** Function · Geriatric fracture · Hip fracture · Outcome · Quality of life · SF 12

✉ Sophie Moerman  
sophie.moerman@rdgg.nl

<sup>1</sup> Department of Orthopedic Surgery, Reinier de Graaf Group, Reinier de Graafweg 3-11, 2625, AD, Delft, The Netherlands

<sup>2</sup> Centre for Orthopedic Surgery OCON, Geerdinksweg 141, 7555, DL, Hengelo, The Netherlands

<sup>3</sup> Department of Surgery-Traumatology, Erasmus MC, University Medical Centre Rotterdam, 's-Gravendijkwal 230, 3015, CE, Rotterdam, The Netherlands

<sup>4</sup> Department of Internal Medicine, Section of Gerontology and Geriatrics, VU University Medical Centre, De Boelelaan 1117, 1007, MB, Amsterdam, The Netherlands

<sup>5</sup> Department of Orthopedic Surgery Leiden University Medical Centre, Albinusdreef 2, 2333, ZA, Leiden, The Netherlands

## Introduction

The number of hip fracture patients will keep growing with an estimated increase in Europe from 615.000 in 2010 to 815.000 in 2025 (+32 %) due to demographic changes [1]. Hip fracture patients suffer from a decline in mobility [2, 3] and loss of independence [4, 5] in the first year after the fracture treatment. The large and increasing number of hip fracture patients in combination with the large impact on patients' daily living activities stresses the importance of analysis of factors associated with postoperative outcome in these patients.

Previous studies have shown that the Health-Related Quality of Life (HRQoL) score decreases after a hip

fracture, whereas the Physical health Component Summary Score (PCS) decreases more than Mental health Component Summary Score (MCS) [6–14]. Older age, more comorbidities [12], higher baseline HRQoL [15, 16], lower body mass index, lower bone mineral density [17] treatment with osteosynthesis [18] and complications after internal fixation of femoral neck fractures [11] were identified as specific risk factors for lower HRQoL after a hip fracture. It has been described earlier that the lowest HRQoL is reached in the first 3 months after a hip fracture, with some improvement in the years thereafter; however, the prefracture HRQoL is never regained [19].

The aim of the current study was to evaluate the course of HRQoL with specific emphasis on the risk factors for decline in HRQoL during the first 3 months after a hip fracture and the factors associated with recovery of HRQoL after these 3 months in a large prospective cohort of patients.

## Patients and methods

### Patient cohort

A prospective observational cohort including 461 hip fracture patients [OTA classification 31-A, B and 32-(1–3)0.1] [20] aged 50 years and older was included. All patients were consecutively admitted to a 450-bed teaching hospital (Delft, the Netherlands) between March 2008 and December 2009. Patients with a fracture due to a high-energy trauma or with a pathologic fracture were excluded. Patients with a contralateral hip fracture within the time window of the study ( $n = 20$ ), those who were treated conservatively ( $n = 14$ ) and patients who were cognitively impaired ( $n = 92$ ) were excluded from the study. The latter was done because cognitive impairment influences HRQoL questionnaire accuracy [21]. Cognitive impairment was defined as dementia, based upon history taking from patients, family and other caretakers or a delirium at the time of admission (based on the DSM-IV criteria) [22]. Thus, 335 patients were eligible for the analysis. Length of follow-up for all patients was 12 months or up to death.

Uniform collection and recording of data of all patients of this cohort was achieved by evaluation at admission (baseline) and after three and 12 months, according to the local standardized care pathway for hip fracture patients [23]. Collected demographic data were age (divided into two categories based on the median, younger than 80 years and older than 80 years), gender, American Society of Anesthesiologists (ASA) Physical Status classification [24], presence of a partner at admission, living institutionalized or living at home prior to admission and

prefracture level of mobility (mobile with or without an aid). A cane, crutch(es) or walker were all considered as aids. Characteristics obtained during admission were presence of anemia at admission, defined as a hemoglobin (Hb) below 7.5 mmol/L (12 g/dL) in women and below 8.1 mmol/L (13 g/dL) in men [25], type of hip fracture (intracapsular or extracapsular), type of treatment (osteosynthesis or arthroplasty); diagnosis of delirium based on DSM-IV criteria [22] and length of stay (LOS, divided into two categories based on the median,  $\leq$  or  $>9$  days). Mortality was scored meticulously by repeated consultation of the population registers of the counties in the region of the hospital as well as the hospital's patient registration systems for the full length of follow-up.

### Health-related quality of life (SF-12)

To measure HRQoL, the Dutch version of the SF-12 was used [26–28]. The SF-12 is a 12-item generic health instrument that evaluates eight domains including restrictions or limitations on physical and social activities, normal activities and responsibilities of daily living, pain, mental health and wellbeing and perceptions of health. The SF-12 is divided in a Physical Component summary Score (PCS) and a Mental Component summary Score (MCS), with a maximum score of 100 each. The SF-12 has been shown to be valid, reliable, and responsive in a wide variety of populations and contexts, including patients with orthopedic conditions [29]. Baseline HRQoL was registered at admission on the Emergency Department. Patients were asked to score their prefracture level of HRQoL retrospective, referring to a period prior to the fracture. Measurement of the HRQoL was repeated prospective during routine follow-up at three and 12 months after the hip fracture in the outpatient clinic or by a questionnaire sent to the patient.

### Statistical analysis

*Statistical analysis was performed using SPSS 19.0. (IBM Corporation, Somers, NY, USA)*

Baseline differences in HRQoL for different patient characteristics (i.e., age, gender) were tested using the unpaired *T* test when the data were normally distributed. Decline in HRQoL between baseline and 3 months was calculated for all patients and for different patient characteristics, an unpaired *T* test was used to test for differences.

For all patients with HRQoL data at baseline and at 3 months a multivariable logistic regression analysis was performed using age, gender, ASA classification, presence of partner at admission, living institutionalized prior to admission, prefracture level of mobility, presence of

anemia, type of fracture, type of treatment, occurrence of a delirium and LOS as potential variables associated with decline and recovery of HRQoL. The same analysis was performed for patients with HRQoL data at 3 and 12 months. Multicollinearity was tested by Collinearity Statistics. Non-significant variables were removed one by one, removing the largest  $P$  value first, until all remaining variables in the model had a  $P$  value  $<0.10$ . The coefficient of determination ( $R^2$ ) indicating how much of the variability in the PCS and MCS is explained by the explanatory variables was calculated.

## Results

Baseline HRQoL data were complete in 278 patients out of the 335 patients included in the cohort (83 %), after 3 months HRQoL data were complete in 245 out of 303 patients (81 %). Thirty-two patients (10 %) died in the first 3 months. After 12 months HRQoL was completed in 211 out of 276 patients (76 %) (Fig. 1). Fifty-nine patients (17.6 %) died within the first year after hip fracture at a median of 71.0 days (SD 96 days, interquartile range 22–201). A total of 173 patients (52 %) completed HRQoL data at baseline, 3 and 12 months. There were 103 patients alive at 12 months who had missing HRQoL data on one or more time points. The patients with complete follow-up were more often ASA I/II [ $n = 140$  (81 %) versus  $n = 68$  (64 %)  $P = 0.005$ ], had more often a partner at admission

[ $n = 83$  (52.0 %) versus  $n = 34$  (28.9 %)  $P = 0.04$ ] and lived less often in an institution [ $n = 15$  (8.7 %) vs.  $n = 25$  (24.5 %)  $P < 0.001$ ]. The other characteristics were not different between these groups.

## Baseline HRQoL PCS and MCS

Table 1 displays baseline characteristics of the cohort. Table 2 displays baseline HRQoL stratified by risk factors. PCS was higher at baseline in the patients younger than 80 years of age, males, patients with ASA classification I/II, with a partner at admission, not living in an institution prior to admission, who were mobile without an aid, who had no anemia at admission and who stayed in hospital shorter than 9 days. The baseline MCS was higher for patients younger than 80 years of age, males, patients with ASA classification I/II, with partner at admission, not living institutionalized prior to their fracture, mobile without an aid and who did not suffer from a delirium during admission.

## Course of HRQoL

Both PCS and MCS declined in the first 3 months. (Fig. 2) PCS did not recover to the baseline value at 12 months follow-up, whereas MCS did.

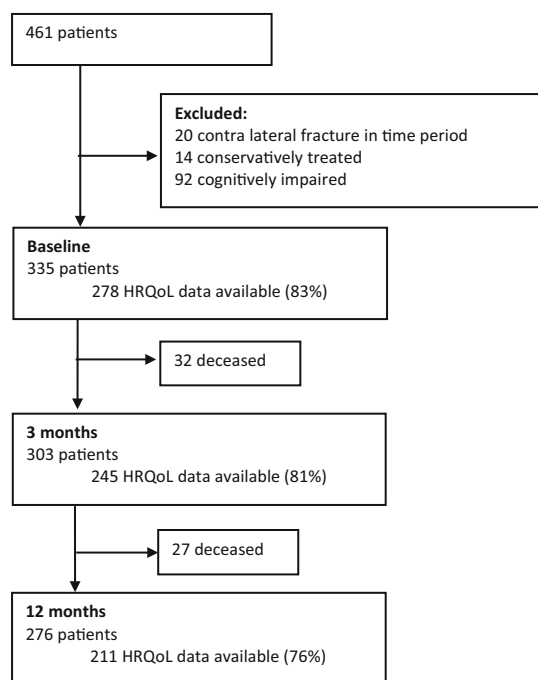
## Factors associated with decline and recovery of PCS

Analysis of difference in HRQoL between baseline and 3 months shows that male gender, lower ASA classification and higher prefracture mobility level was associated with a higher decline of PCS (univariate analysis, Table 3). Higher prefracture mobility level was associated with a higher recovery of PCS between three and 12 months.

In multilevel analysis, younger age, lower ASA classification, higher prefracture mobility level, intracapsular fracture and treatment with osteosynthesis were independently associated with larger loss in PCS HRQoL in the first 3 months (Table 4). Higher prefracture mobility level, intracapsular fracture, treatment with osteosynthesis and length of stay more than 9 days were associated with higher recovery of PCS HRQoL between 3 and 12 months (Table 5). Figure 3 shows PCS course in time stratified by age, ASA, mobility, type of fracture, type of treatment and length of stay.

## Factors associated with decline and recovery of MCS

Univariate analysis shows none of the studied factors associated with a higher initial decline and a later increase of MCS. No model could be made for MCS decline



**Fig. 1** Flowcharts of available and analyzed patients

**Table 1** Baseline patient characteristics

		Number (%)
Age (median, range)		Median 80.5 (50–101)
Gender	Female	227 (68 %)
ASA classification	I/II	233 (70 %)
Partner at admission <sup>a</sup>	Yes	127 (39 %)
Living in an institution prior to admission <sup>b</sup>	Yes	64 (19 %)
Prefracture level of mobility <sup>c</sup>	With aid	139 (47 %)
Anemia at admission <sup>d</sup>	Yes	124 (37 %)
Type of fracture	Intracapsular <sup>f</sup>	202 (60 %)
Type of treatment <sup>e</sup>	Arthroplasty <sup>g</sup>	121 (37 %)
Delirium <sup>d</sup>	Yes	49 (15 %)
Length of stay (median, range)		Median 9 (3–71)

Values missing <sup>a</sup> = 11, <sup>b</sup> = 1, <sup>c</sup> = 40, <sup>d</sup> = 9, <sup>e</sup> = 4

<sup>f</sup> Opposed to extracapsular

<sup>g</sup> Opposed to osteosynthesis

between baseline and 3 months and recovery between three and 12 months, as none of the risk factors were significant predictors in the multilevel analysis.

## Discussion

In this observational cohort study on HRQoL in hip fracture patients during the first postoperative year, HRQoL declined, which was more pronounced in the PCS than in the MCS. The PCS did not recover to baseline values at 12 months postoperation, whereas MCS did. Age, ASA classification, prefracture level of mobility, type of fracture and type of treatment were associated with the decline in the PCS.

Our findings that patients did not recover to their baseline PCS level, but did recover to their preoperative MCS level are in accordance with other cohort studies [6, 9, 10, 12–14, 17, 19, 30, 31]. A meta-analysis by Peasgood et al. [19] also showed the lowest HRQoL in the first 3 months after a hip fracture, with some improvement in the years thereafter, but never full recovery to the prefracture level.

Lower ASA classification, higher prefracture level of mobility and younger age were associated with a relatively larger decline in PCS HRQoL after a hip fracture, i.e., the more healthy patients suffered the most from the sequelae of a hip fracture. An international cohort study on 1273 hip fracture patients showed that patients with higher HRQoL at baseline had greater loss of HRQoL after their hip fracture [15]. A study on the same cohort of hip fracture patients as the current study focussing on of the level of mobility showed that the most mobile patients were least likely to return to their prefracture mobility level after 3 months [2]. Since these healthier and more active

patients have a larger decline of their PCS HRQoL, more attention in the postoperative rehabilitation should be given to them, whilst a general feeling might exist that these healthier patients might need less attention. Special rehabilitation programs with focus on mobilization and early discharge policy for this group could contribute to this.

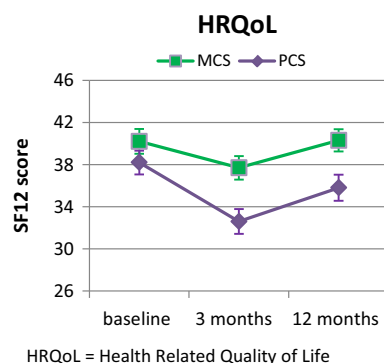
Younger age in our cohort was associated with a larger decline in the first 3 months, while most studies showed that older age is associated with larger loss in HRQoL [12, 15]. These other studies, however, measured HRQoL after one or 2 years, and younger patients recover quicker after these first 3 months.

Patients with intracapsular fractures are in general younger (mean 2 years), more mobile and less dependent regarding activities of daily living compared to patients with extra capsular fractures [32–34]. Since these patients with an intracapsular fracture seem to be healthier, they are more likely to have a larger initial decline in HRQoL.

In the Norwegian hip fracture register, patients treated with an osteosynthesis for a displaced femoral neck fracture had higher reoperation rates, higher long-term mortality and a lower HRQoL after 4 months, compared to those treated with a hemiarthroplasty [18]. Buecking et al. demonstrated that treatment with osteosynthesis was associated independently with a larger decrease in HRQoL at discharge [35]. Both studies confirm our finding that patients treated with osteosynthesis have a larger loss in HRQoL compared to those treated with arthroplasty. This suggests that arthroplasty should be considered with a low threshold. However, in our study osteosynthesis was associated with a larger recovery in HRQoL between 3 months and 1 year. This resulted in an equal loss in HRQoL between osteosynthesis and prosthesis in the first year.

**Table 2** Baseline physical (PCS) and mental component score (MCS) stratified by risk factors

	PCS	95 % CI	<i>P</i>	MCS	95 % CI	<i>P</i>
All patients ( <i>n</i> = 335)	38.2	37.1–39.4		40.2	39.1–41.2	
Age						
<80	41.6	40.0–43.1		41.7	40.2–43.2	
≥80	35.3	33.8–36.7	<b>&lt;0.01</b>	38.8	37.3–40.2	<b>&lt;0.01</b>
Gender						
Female	36.9	35.5–38.2		39.8	38.5–41.0	
Male	41.2	39.2–43.2	<b>0.04</b>	41.0	39.1–42.9	<b>0.04</b>
ASA classification						
I/II	40.8	39.6–42.1		41.5	40.2–42.7	
III/IV	31.5	29.5–33.5	<b>&lt;0.01</b>	36.8	34.9–38.8	<b>&lt;0.01</b>
Partner at admission						
Yes	40.7	38.9–42.4		43.0	41.3–44.7	
No	37.0	35.5–38.5	<b>0.01</b>	38.7	37.3–40.1	<b>0.03</b>
Living in an institution prior to admission						
Yes	31.0	28.4–33.7		34.6	32.0–37.1	
No	39.7	38.5–40.9	<b>&lt;0.01</b>	41.3	40.2–42.4	<b>&lt;0.01</b>
Prefracture level of mobility						
With aid	32.4	30.9–33.9		38.1	36.5–39.7	
Without aid	45.0	43.6–46.4	<b>&lt;0.01</b>	42.8	41.4–44.3	<b>&lt;0.01</b>
Anemia at admission						
Yes	35.4	33.5–37.2		39.8	38.0–41.6	
No	39.9	38.6–41.3	<b>0.05</b>	40.4	39.1–41.8	0.71
Type of fracture						
Intracapsular	39.2	37.8–40.7		40.8	39.4–42.2	
Extracapsular	36.2	34.3–38.1	0.18	39.0	37.1–40.8	0.30
Type of treatment						
Arthroplasty	36.8	34.9–38.6		39.2	37.4–40.9	
Osteosynthesis	39.4	37.9–40.8	0.42	40.8	39.4–42.1	0.25
Delirium						
Yes	34.0	31.0–36.9		35.6	32.9–38.4	
No	39.1	37.9–40.3	0.18	41.0	39.9–42.1	<b>&lt;0.01</b>
Length of stay (days)						
≤9	41.6	40.1–43.2		41.6	40.1–43.1	
>9	35.2	33.7–36.7	<b>&lt;0.01</b>	38.9	37.5–40.3	<b>&lt;0.01</b>

Bold values indicate  $p < 0.05$ **Fig. 2** Course of mental component score (MCS) and physical component score (PCS) in time mean (SD)

None of the factors were significant predictors for decline or recovery of MCS HRQoL after a hip fracture. This is in contrast to others who found that comorbidities were associated with a larger decline in MCS HRQoL, but that study included only 61 patients [12].

The strengths of our study are its prospective character, the size of the cohort ( $n = 335$ ) and the length of follow-up (1 year). Only a few prospective studies reporting on factors associated with the course of PCS HRQoL after a hip fracture are known [12, 15, 35]. Two studies had a relatively short follow-up: one ( $n = 402$ ) up until discharge, [35] the other ( $n = 1273$ ) 4 months [15]. The study with the longest follow-up (2 years) was small study ( $n = 61$ ) [12].

**Table 3** Decline and recovery of the physical component score (PCS) stratified by risk factors

	Decline between baseline and 3 months			Recovery between 3 and 12 months		
	$\Delta$	CI	<i>P</i>	$\Delta$	CI	<i>P</i>
All patients ( <i>n</i> = 218)	−5.6	−6.8; −4.4		3.1	1.8; 4.4	
Age						
<80	−6.6	−8.8; −4.3		4.2	1.9; 6.5	
≥80	−4.7	−6.9; −2.5	0.30	2.0	−0.4; 4.3	0.07
Gender						
Female	−4.7	−6.7; −2.8		2.4	0.4; 4.5	
Male	−7.4	−10.2; −4.5	<b>&lt;0.01</b>	4.5	1.5; 7.4	0.12
ASA classification						
I/II	−6.9	−8.7; −5.1		3.7	1.8; 5.6	
III/IV	−1.6	−4.6; 1.4	<b>&lt;0.001</b>	0.9	−2.4; 4.3	0.08
Partner at admission						
Yes	−6.0	−8.5; −3.5		4.2	1.6; 6.7	
No	−5.4	−7.6; −3.3	0.61	2.1	−0.2; 4.4	0.10
Living in an institution prior to admission						
Yes	−3.2	−7.2; 0.9		0.9	−3.9; 5.7	
No	−6.0	−7.7; −4.3	0.15	3.3	1.5; 5.1	0.29
Prefracture level of mobility						
With aid	−2.5	−4.6; −0.3		0.6	−1.8; 3.0	
Without aid	−8.8	−10.7; −6.8	<b>&lt;0.001</b>	5.2	3.1; 7.3	<b>&lt;0.001</b>
Anemia at admission						
Yes	−4.0	−6.7; −1.2		2.2	−0.8; 5.2	
No	−6.5	−8.5; −4.5	0.08	3.5	1.5; 5.6	0.28
Type of fracture						
Intracapsular	−6.1	−8.2; −4.1		3.9	1.7; 6.0	
Extracapsular	−4.8	−7.7; −2.0	0.36	2.2	−0.7; 5.2	0.20
Type of treatment						
Arthroplasty	−4.6	−7.3; −2.0		1.4	−1.5; 4.3	
Osteosynthesis	−6.2	−8.3; −4.2	0.26	3.9	1.8; 6.1	0.06
Delirium						
Yes	−3.5	−8.0; 1.1		0.3	−4.7; 5.4	
No	−6.0	−7.8; −4.3	0.23	3.6	1.7; 5.4	0.14
Length of stay (days)						
≤9	−6.3	−8.0; −4.5		2.9	1.2; 4.5	
>9	−5.6	−7.7; −3.5	0.94	3.3	1.5; 5.2	0.78

Bold values indicate  $p < 0.05$

**Table 4** Multivariable analysis of decline in Physical Component Score (PCS) between baseline and 3 months

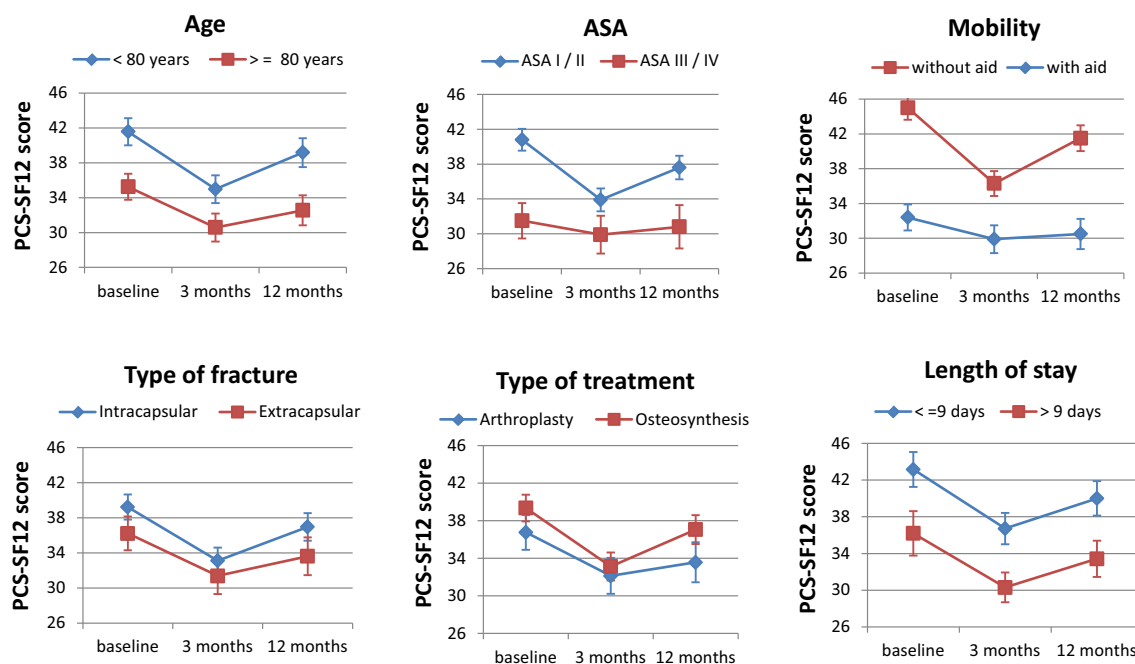
	<i>B</i>	95 % CI	<i>P</i>
Age			
<80 years	−4.36	−8.11; −0.60	0.023
ASA classification			
I/II	−4.48	−8.28; −0.68	0.007
Prefracture level of mobility			
Without aid	−6.15	−9.81; −2.48	0.001
Type of fracture			
Intracapsular	−7.48	−12.98; −1.98	0.008
Type of treatment			
Osteosynthesis	−7.40	−12.89; −1.92	0.009

$R$  square = 0.193

**Table 5** Multivariable analysis of recovery in Physical Component Score (PCS) between 3 and 12 months

		<i>B</i>	95 % CI	<i>P</i>
Prefracture level of mobility	Without aid	3.95	1.33; 6.56	0.003
Type of fracture	Intracapsular	4.36	1.28; 7.43	0.006
Type of treatment	Osteosynthesis	5.49	2.28; 8.70	0.001
Length of stay	>9 days	3.28	0.64; 5.92	0.015

*R* square = 0.151

**Fig. 3** Physical component score (PCS) course in time stratified by age, ASA, mobility, type of fracture, type of treatment and length of stay. Mean (SD)

A limitation of our study is the incomplete follow-up: the follow-up rate ranged from 76 to 83 %, corrected for mortality. This follow-up rate can be classified as substantial. The mortality rate of 17.6 % is lower than the recently reported average 1-year mortality after hip fracture of 22–29 % [36]. Since we used multilevel analysis, a part of the problem of the incomplete follow-up is addressed for in our data analysis. Inclusion of the preoperative and 3-month results of patients who died in the first year after the fracture might have influenced our results, while those patients probably had lower HRQoL scores when they would have been alive at 12 months.

Recall bias may be present for baseline HRQoL, which was recorded at admission in the hospital in the emergency department, but recent literature showed that recall data are accurate [37–39]. Also since we excluded cognitive impaired patients, our results can be generalizable only to hip fracture patients who are mentally fit [21]. Medical comorbidities were not scored as individual parameter, but ASA score was used as a reflection of comorbidities.

Finally, the SF-12 was used to measure HRQoL although in 2007 the European Consumer Safety Association advised to use a combination of EuroQol-5D and Health Utilities Mark III in all studies on injury-related disability [40]. However, the SF-12 has been shown to be valid, reliable, and responsive in patients with orthopedic conditions [29].

In summary, the initial decline in PCS HRQoL, 3 months after a hip fracture, was larger in healthier patients (younger than 80 years, higher prefracture level of mobility, ASA I and II et cetera), most probably due to their higher prefracture values. This implies that these patients need extra care or health professionals should be aware that also “healthy” patients could deteriorate after a significant life event like a hip fracture. Thus, prevention from overall decline in HRQoL should also be focused at this patient group and not only on the frail patient group. Special rehabilitation programs and discharge policy for this group and not only for the more frail patients is justified. Since the decline in PCS HRQoL

in the first 3 months was larger in patients treated with osteosynthesis compared to those treated with arthroplasty of the hip, the latter option should be considered with a low threshold.

### Compliance with ethical standards

**Conflict of interest** The department of orthopaedic surgery and the orthopaedic research foundation in Reinier de Graaf Hospital receive grants from Zimmer Biomet. Each author certifies that he or she and members, or a member of his/her immediate family, have no commercial associations (e.g., consultancies, stock ownership, equity interest, patent/licensing arrangements, etc.) that might pose as a conflict of interest in connection with the content of the submitted article.

### References

- Hernlund E, Svedbom A, Ivergård M et al (2013) Osteoporosis in the European Union: medical management, epidemiology and economic burden. *Arch Osteoporos* 8:136
- Vochteloo AJ, Moerman S, Tuinebreijer WE et al (2012) More than half of hip fracture patients do not regain mobility in the first postoperative year. *Geriatr Gerontol Int* 2:334–341
- Bentler SE, Liu L, Obrizan M et al (2009) The aftermath of hip fracture: discharge placement, functional status change, and mortality. *Am J Epidemiol* 170:1290–1299
- Vochteloo AJH, van Vliet-Koppert ST, Maier AB et al (2012) Risk factors for failure to return to the pre-fracture place of residence after hip fracture: a prospective longitudinal study of 444 patients. *Arch Orthop Trauma Surg* 132:823–830
- Bond J, Gregson B, Smith M et al (2000) Predicting place of discharge from hospital for patients with a stroke or hip fracture on admission. *J Health Serv Res Policy* 5:133
- Peterson M, Allegrante J, Cornell C et al (2002) Measuring recovery after a hip fracture using the SF-36 and Cummings scales. *Osteoporos Int* 13:296–302
- Adachi JD, Ioannidis G, Berger C et al (2001) International original article the influence of osteoporotic fractures on health-related quality of life in community-dwelling men and women across canada. pp 903–908
- Hallberg I, Bachrach-Lindström M, Hammerby S et al (2009) Health-related quality of life after vertebral or hip fracture: a seven-year follow-up study. *BMC Musculoskelet Disord* 10:135
- Brenneman SK, Barrett-connor E, Sajjan S et al (2006) Impact of recent fracture on health-related quality of life in postmenopausal women. *J Bone Miner Res* 21:809–816
- Randell AG, Nguyen TV, Bhalarao N et al (2000) Deterioration in quality of life following hip fracture: A prospective study. *Osteoporos Int* pp 460–466
- Tidermark J, Zethraeus N, Svensson O et al (2002) Femoral neck fractures in the elderly: functional outcome and quality of life according to EuroQol. *Qual Life Res* 11:473–481
- Rohde G, Haugeberg G, Mengshoel AM et al (2010) Two-year changes in quality of life in elderly patients with low-energy hip fractures, A case-control study. *BMC Musculoskelet Disord* 11:226
- Shyu Y-IL, Chen M-C, Liang J et al (2004) Changes in quality of life among elderly patients with hip fracture in Taiwan. *Osteoporos Int* 15:95–102
- Pande I, Scott DL, O'Neill TW et al (2006) Quality of life, morbidity, and mortality after low trauma hip fracture in men. *Ann Rheum Dis* 65:87–92
- Borgström F, Lekander I, Ivergård M et al (2013) The international costs and utilities related to osteoporotic fractures study (ICUROS)—quality of life during the first 4 months after fracture. *Osteoporos Int* 24:811–823
- Borgström F, Zethraeus N, Johnell O et al (2006) Costs and quality of life associated with osteoporosis-related fractures in Sweden. *Osteoporos Int* 17:637–650
- Hallberg I, Rosenqvist AM, Kartous L et al (2004) Health-related quality of life after osteoporotic fractures. *Osteoporos Int* 15:834–841
- Gjertsen J-E, Vinje T, Lie SA et al (2008) Patient satisfaction, pain, and quality of life 4 months after displaced femoral neck fractures: a comparison of 663 fractures treated with internal fixation and 906 with bipolar hemiarthroplasty reported to the Norwegian Hip Fracture Register. *Acta Orthop* 79:594–601
- Peasgood T, Herrmann K, Kanis JA, Brazier JE (2009) An updated systematic review of Health State Utility Values for osteoporosis related conditions. *Osteoporos Int* 20:853–868
- Marsh JL, Slongo T, Agel J et al (2007) Fracture and dislocation classification compendium—2007. *J Orthop Trauma* 21:1–6
- Parker SG, Bechinger-English D, Jagger C et al (2006) Factors affecting completion of the SF-36 in older people. *Age Ageing* 35:376–381
- DSM IV-R D (2000) Statistical manual of mental disorders, text revision (DSM IV-R). Washington DC Am Psychiatry, Assoc
- Vochteloo AJH, Niesten D, Cornelisse H et al (2009) Voor elke heup een rode map. *Med Contact (Bussum)* 158–162
- Owens W, Felts J (1978) ASA physical status classifications: a study of consistency of ratings. *Anesthesiology* 49:239–243
- (1968) Nutritional anaemias. Report of a WHO scientific group. *World Health Organ Tech Rep Ser* 405:5–37
- Mols F, Pelle AJ, Kupper N (2009) Normative data of the SF-12 health survey with validation using postmyocardial infarction patients in the Dutch population. *Qual Life Res* 18:403–414
- Vander Zee KI, Sanderman R, Heyink JW, de Haes H (1996) Psychometric qualities of the RAND 36-Item Health Survey 1.0: a multidimensional measure of general health status. *Int J Behav Med* 3:104–122
- Agel J, Swiontkowski M (2006) Guide to outcomes instruments for musculoskeletal trauma research—PubMed—NCBI. *J Orthop Trauma* 20:1–146
- Gandhi SK, Salmon JW, Zhao SZ et al (2001) Psychometric evaluation of the 12-item short-form health survey (SF-12) in osteoarthritis and rheumatoid arthritis clinical trials. *Clin Ther* 23:1080–1098
- Beaupre LA, Jones CA, Johnston DWC et al (2012) Recovery of function following a hip fracture in geriatric ambulatory persons living in nursing homes: prospective cohort study. *JAGS* 60:1268–1273
- Boonen S, Autier P, Barette M et al (2004) Functional outcome and quality of life following hip fracture in elderly women: a prospective controlled study. *Osteoporos Int* 15:87–94
- Koval KJ, Aharonoff GB, Rokito AS et al (1996) Patients with femoral neck and intertrochanteric fractures. Are they the same? *Clin Orthop Relat Res* 166–72
- Parker M, Pryor G, Anand J (1992) A comparison of presenting characteristics of patients with intracapsular and extracapsular proximal femoral fractures. *J Royal Soc Med* 85:152–155
- Fox KM, Magaziner J, Hebel JR et al (1999) Intertrochanteric versus femoral neck hip fractures: differential characteristics, treatment, and sequelae. *J Gerontol A Biol Sci Med Sci* 54:M635–M640
- Buecking B, Struwer J, Waldermann A et al (2014) What determines health-related quality of life in hip fracture patients at the end of acute care?—a prospective observational study. *Osteoporos Int* 25:475–484

36. Haleem S, Lutchman L, Mayahi R et al (2008) Mortality following hip fracture: trends and geographical variations over the last 40 years. *Injury* 39:1157–1163
37. Marsh J, Bryant D, MacDonald SJ (2009) Older patients can accurately recall their preoperative health status 6 weeks following total hip arthroplasty. *J Bone Joint Surg Am* 91:2827–2837
38. Schmier JK, Halpern MT (2004) Patient recall and recall bias of health state and health status. *Expert Rev Pharmacoecon Outcomes Res* 4:159–163
39. Revicki DA, Turner R, Brown R, Martindale JJ (1992) Reliability and validity of a health-related quality of life battery for evaluating outpatient antidepressant treatment. *Qual Life Res* 1:257–266
40. Van Beeck EF, Larsen CF, Lyons RA et al (2007) Guidelines for the conduction of follow-up studies measuring injury-related disability. *J Trauma* 62:534–550